

THERMAL EXPERT™

Portable Infrared Camera

TE-SQ1

Description

- Array Format : 384x288(12 μ m pitch)
- High sensitivity : ≤ 55 mK@f/1.0
- Scene Temp. : -40°C~350°C
- Battery : 3 hours
- Screen Size : 5" LCD Touchscreen
- Visible & Infrared / LED / Laser pointer

Features

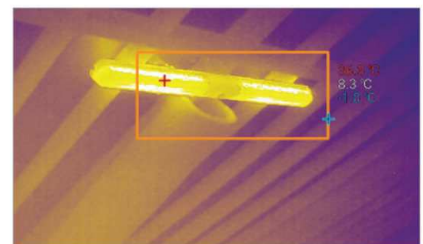
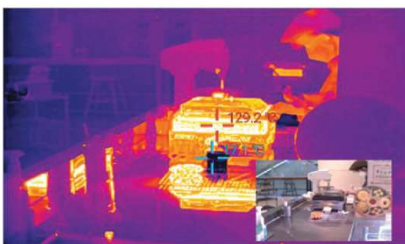
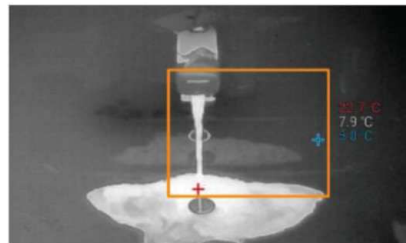
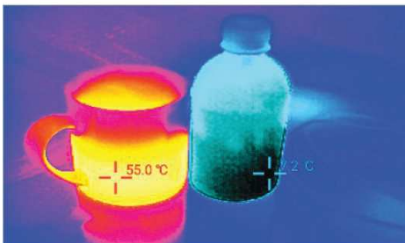
- Color palettes (12 color maps)
- Storage images (IR, visible with snapshot and video)
- Image view with visible (50:50, Twin, Overlay, Floating)
- Temperature Measurement (Alarm, Min/Max, Point/Rectangle/Circle profile)
- Level span (Temp. range control)
- Report (Generate PDF report)
- Wi-Fi streaming, Data Sharing
- Compatible with Analysis Tool
- Digital Zoom
- SD Card, Micro HDMI Support



Application

- Health care
- Building Inspection
- HVAC
- Leisure, Travel

Images from the THERMAL EXPERT™

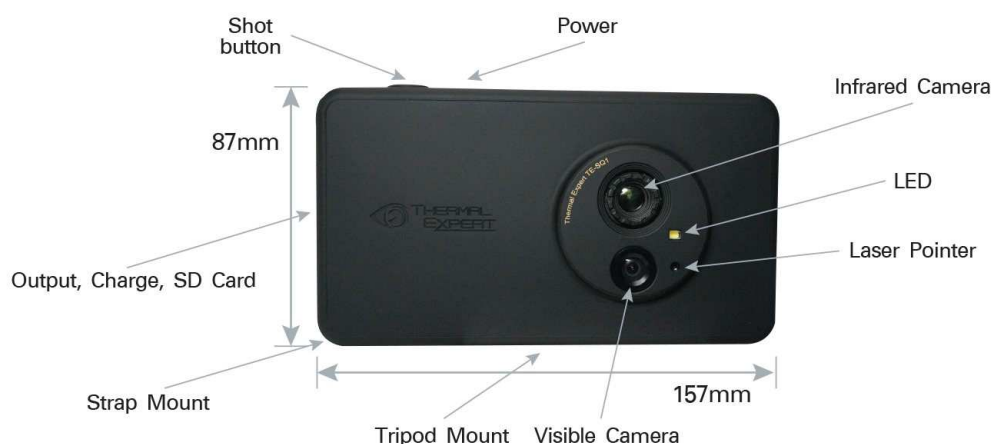


SEE THE NEW WORLD THROUGH i3system, Inc.

Specification

TE-SQ1	
Detector type	Micro-Bolometer (Uncooled)
Array Format and Pitch	384x288, 12 μ m
Thermal Sensitivity (NETD)	$\leq 55\text{mK}@F/1, 300\text{K}(20^{\circ}\text{C}\sim 30^{\circ}\text{C})$
Operability	$\geq 99.0\%$
Spectral range	8~14 μ m
Lens Specification	5.7mm, f/1.1, Manual Focus
Field of View	38 $^{\circ}$ (H)x29 $^{\circ}$ (V)–47 $^{\circ}$ (D)
Frame Rate	< 9Hz
Display	5 Inch (Touch Screen)
Temp. Range	-40 ~ 350 $^{\circ}$ C
Accuracy	0 $^{\circ}$ C ~ 100 $^{\circ}$ C : $\pm 3^{\circ}$ C, 100 $^{\circ}$ C ~ 350 $^{\circ}$ C : $\pm 3\%$ [Ambient temp. 15 to 35 $^{\circ}$ C, Object temp. above 0 $^{\circ}$ C]
Output	Micro HDMI
Operation Temp.	-10 ~ 50 $^{\circ}$ C
Storage	Internal 32GB, Micro SD card (External)
Dimension	157mmx87mmx25mm
Weight	375g
Battery	Li-Ion (Internal), 4200mA

Overview



Reseller and Distributor Contact Europe:
 Voltagezone Electronics e.U.
 Rossmanngasse 20a
 8010 Graz Austria/Europe
 Phone: +43 (0) 677 637 17 090 e-mail: info@thermalexpert.eu
 Webpage: www.thermalexpert.eu