

# THERMAL EXPERT™

## Infrared FEVER Scanner

TE-HQ1

### Description

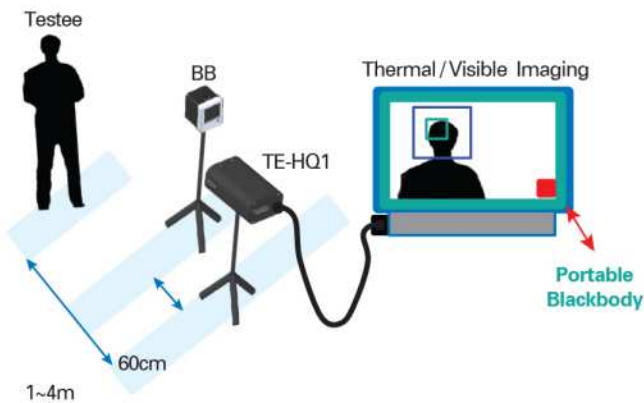
- Defend at the Frontline of Epidemic
- Fever Scanning people in the Crowd
- Key Features
  - Extremely High Accuracy ( $\pm 0.3^{\circ}\text{C}$ )
    - ▶ Non-Contact Thermal FEVER Scanning
      - CALIBRATE continuously with standard heat source
      - CALCULATE distance to compensate the temperature
    - Facial Recognition Algorithm
      - ▶ Thermal / Visible Imaging
      - ▶ AI (Artificial Intelligent) facial recognition
      - ▶ Identify & Record suspected infectees
        - Time Log
        - Face characteristics & descriptions
        - Excelize captured information at once.



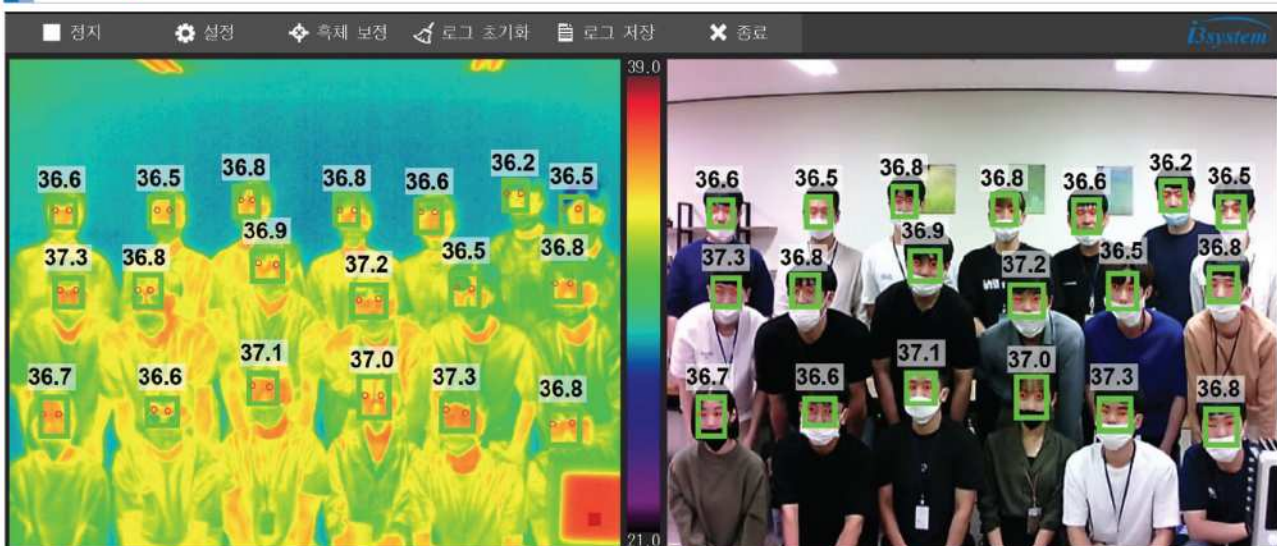
iPB40\_Black body



TE-HQ1



### Image for FEVER Scanner



# SEE THE NEW WORLD THROUGH i3system, Inc.

## Specifications

TE-HQ1	
Detector	Micro-Bolometer(Uncooled)
Thermal Resolution, Pixel pitch	384x288, 17 $\mu$ m
NETD	50mK / F#1.0, 300K
Temp. Accuracy	$\pm 0.3^{\circ}\text{C}$ (distance range 1m~4m)
Wavelength	8 to 14 $\mu$ m
Visible Resolution	1280x720
Time to Image	< 10sec.
Power / Video Output	USB
Framerate	$\leq 30\text{Hz}$
Size	90x60x144(mm)
Weight	< 800g
Operating temp.	10 $^{\circ}\text{C}$ ~ 45 $^{\circ}\text{C}$
Storage temp.	-10 $^{\circ}\text{C}$ ~ 65 $^{\circ}\text{C}$
Power Consumption	$\leq 5\text{W}$

iPB40	
Temp. Range	User specified preset value (34 $^{\circ}\text{C}$ ~40 $^{\circ}\text{C}$ ) (default setting : 36.5 $^{\circ}\text{C}$ )
Temp. Accuracy	$\pm 0.3^{\circ}\text{C}$
Effective Area	40x40(mm)
Emissivity	0.97 $\pm$ 0.02
Power Supply	USB-C or DC Adapter
Power	+5 Vdc (Max 2A)
Power Consumption	< 7.5 W (1.5A)
Time to Use	$\leq 1$ min.
Size (mm)	52(W)x66(H)x54(D)
Weight	$\leq 300\text{g}$ (w/o cables)
Operating temp.	10 $^{\circ}\text{C}$ ~45 $^{\circ}\text{C}$
Features	LED Indicator Mount hole

Focal Length	F#	FOV ( H x V )
9.7mm	f/1.0	37.5 $^{\circ}$ $\pm$ 2 $^{\circ}$ x 28.5 $^{\circ}$ $\pm$ 2 $^{\circ}$

## Dimensions

